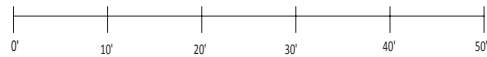
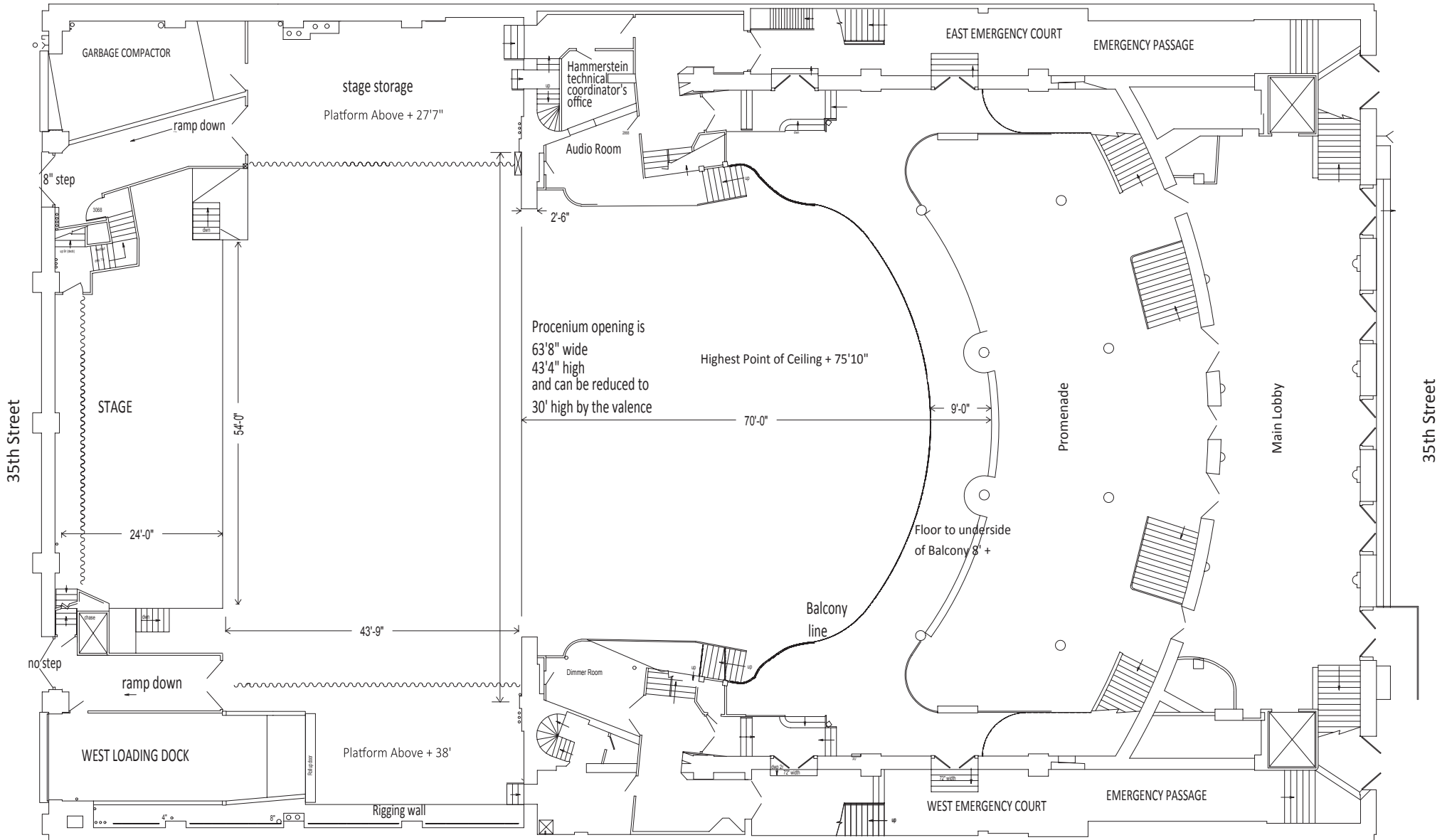
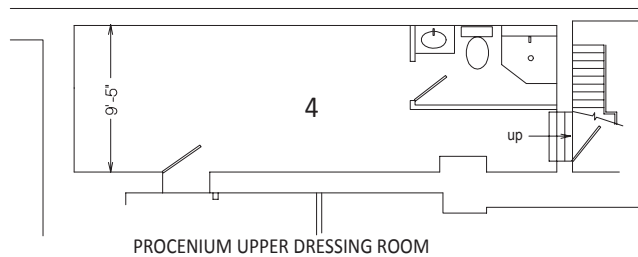
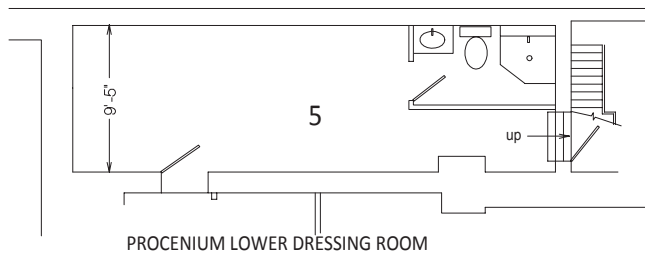
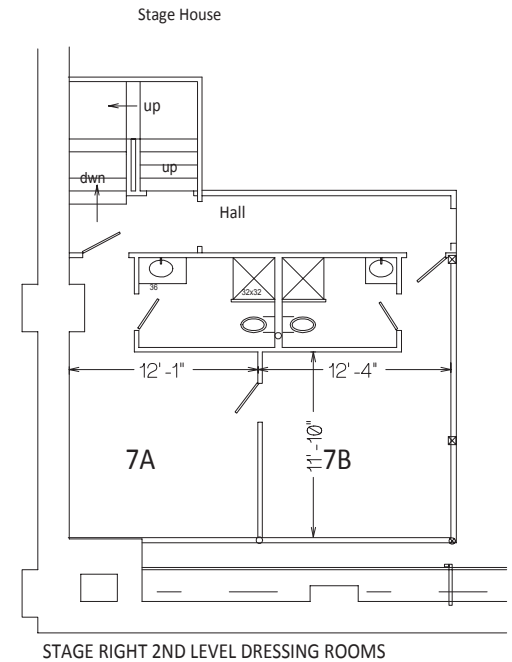
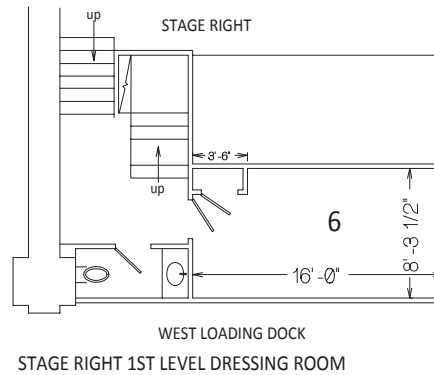
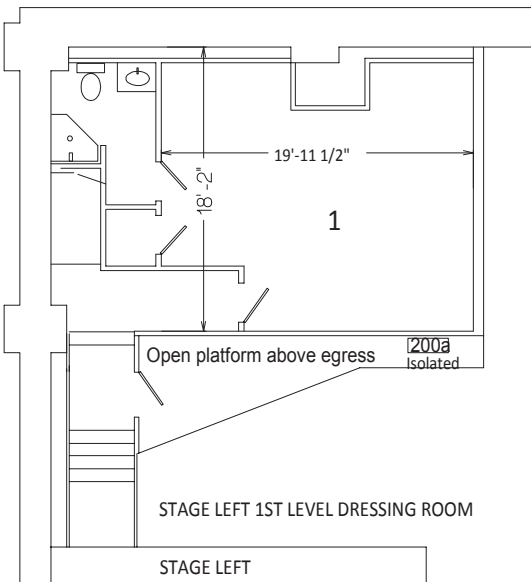
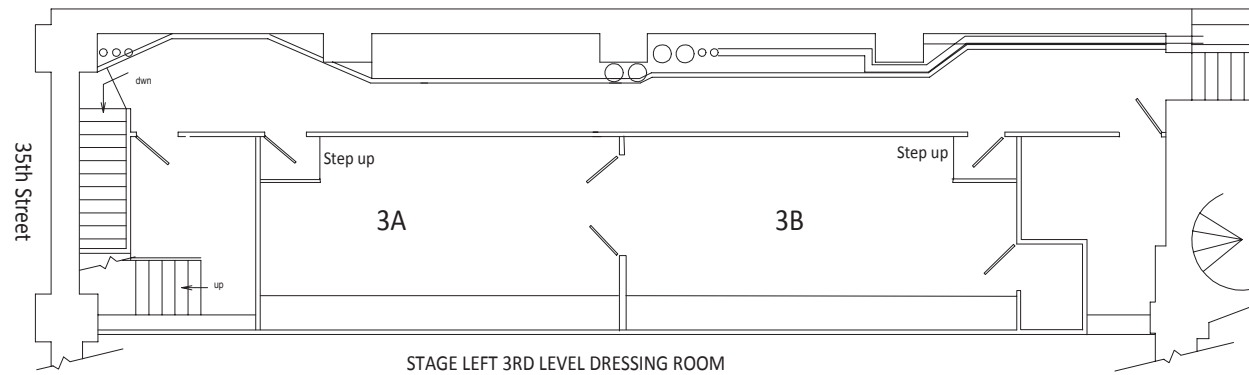
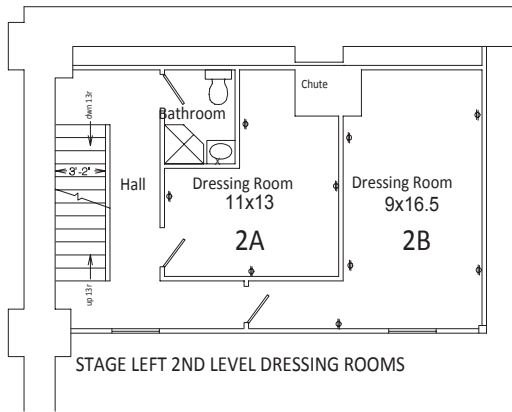


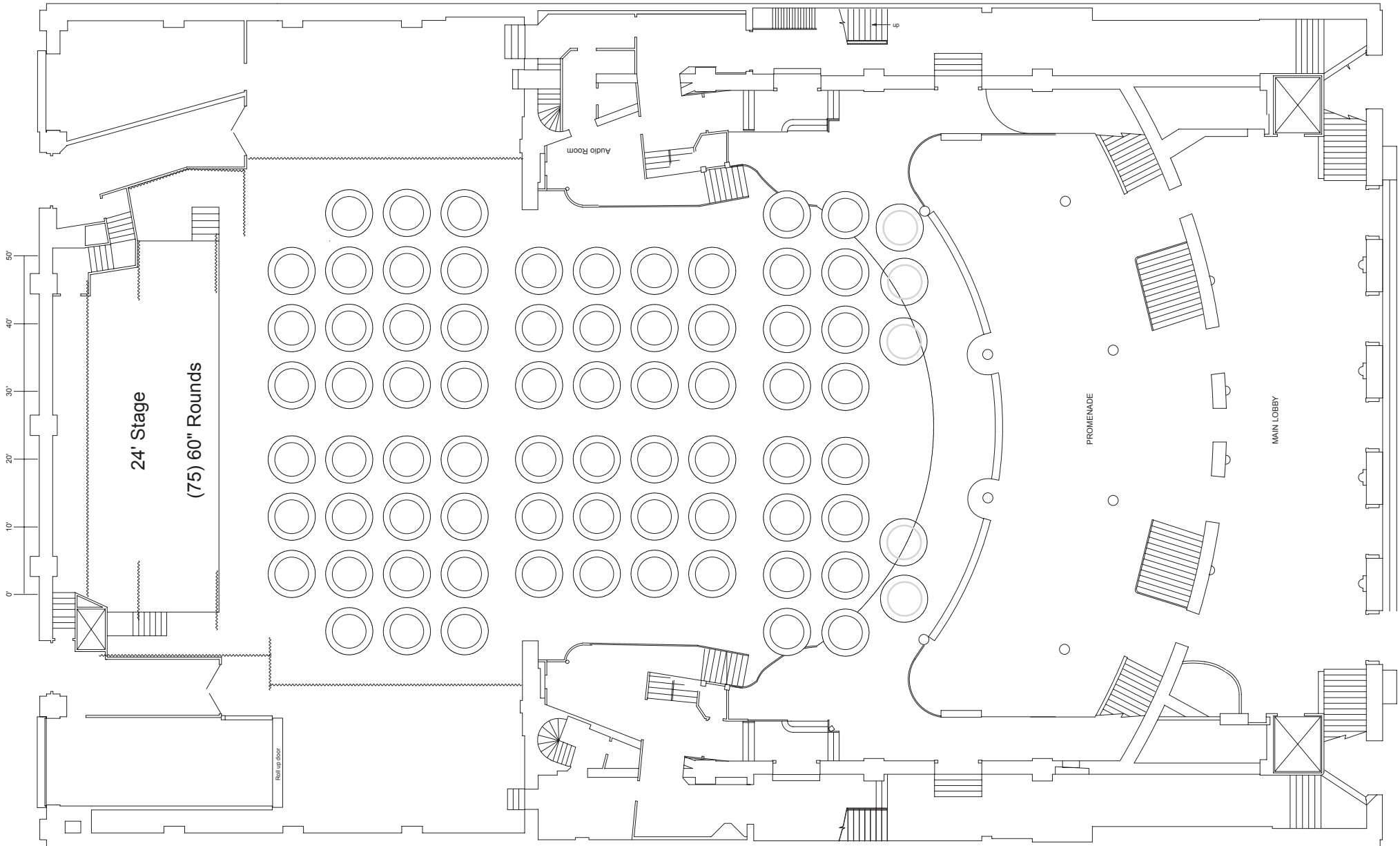
THE HAMMERSTEIN



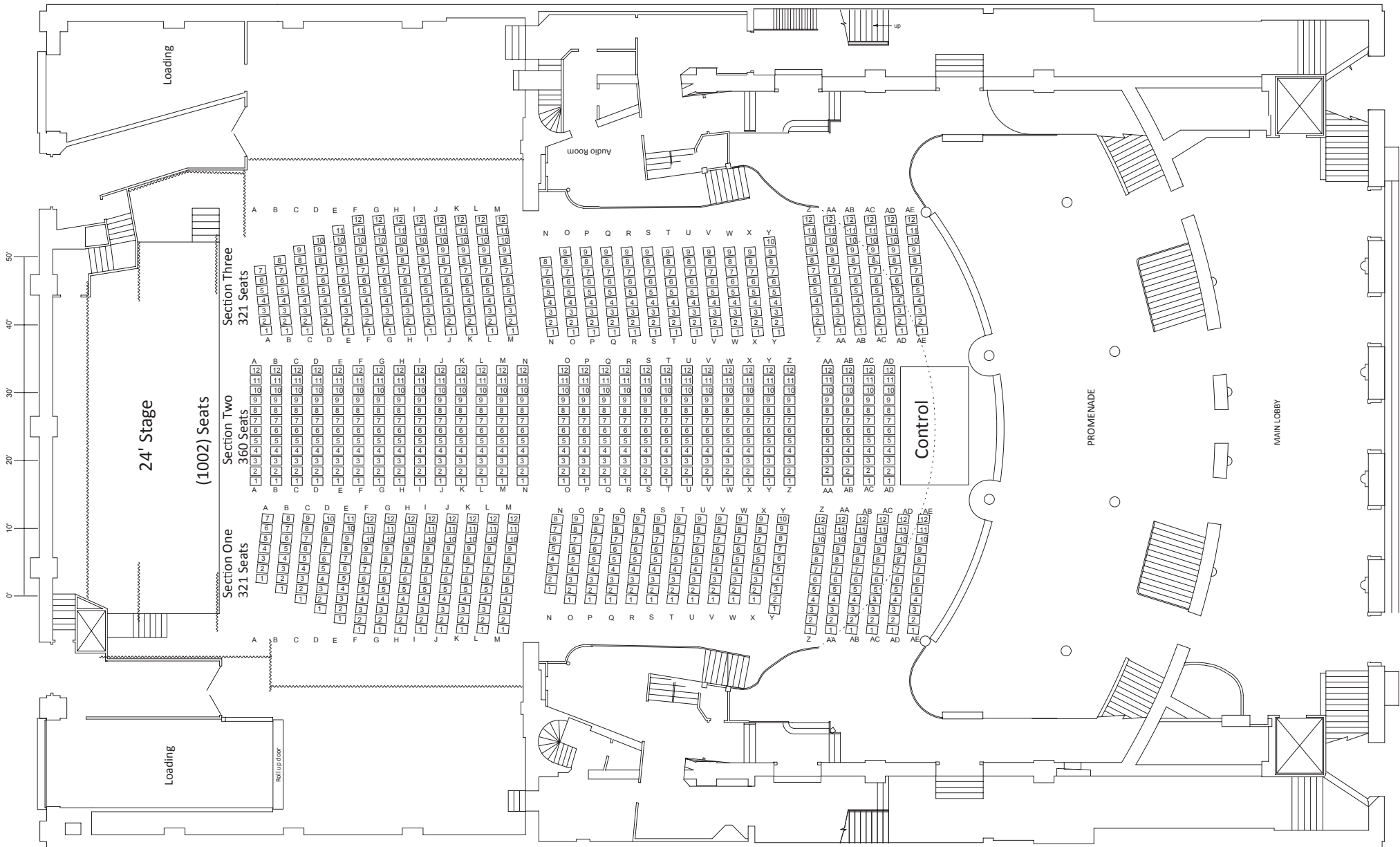
THE HAMMERSTEIN: DRESSING ROOMS



THE HAMMERSTEIN: FULL BANQUET

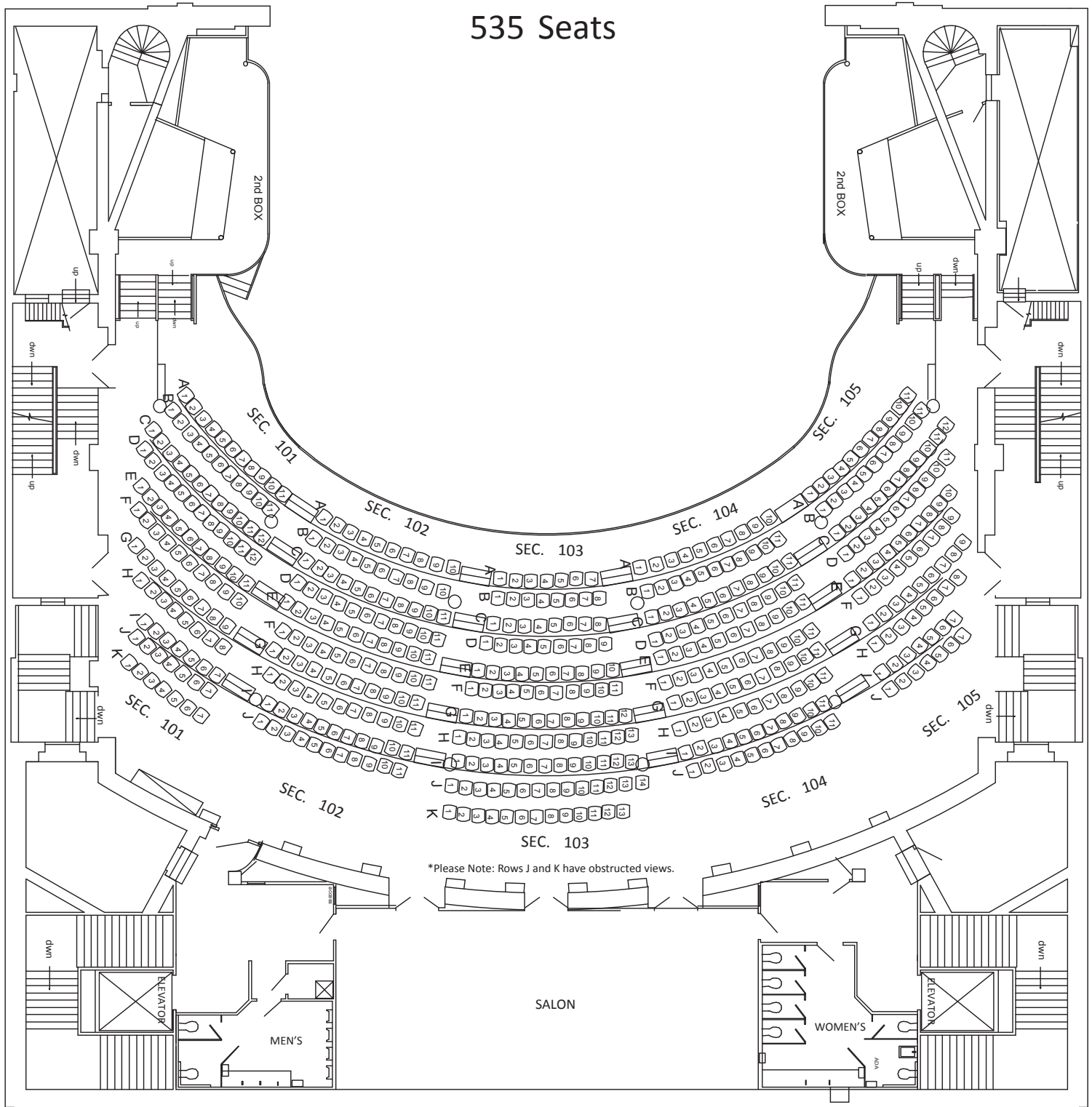


THE HAMMERSTEIN: SEATED 24' STAGE



THE HAMMERSTEIN: 1ST BALCONY

535 Seats



*Please Note: Rows J and K have obstructed views.

SALON

MEN'S

WOMEN'S

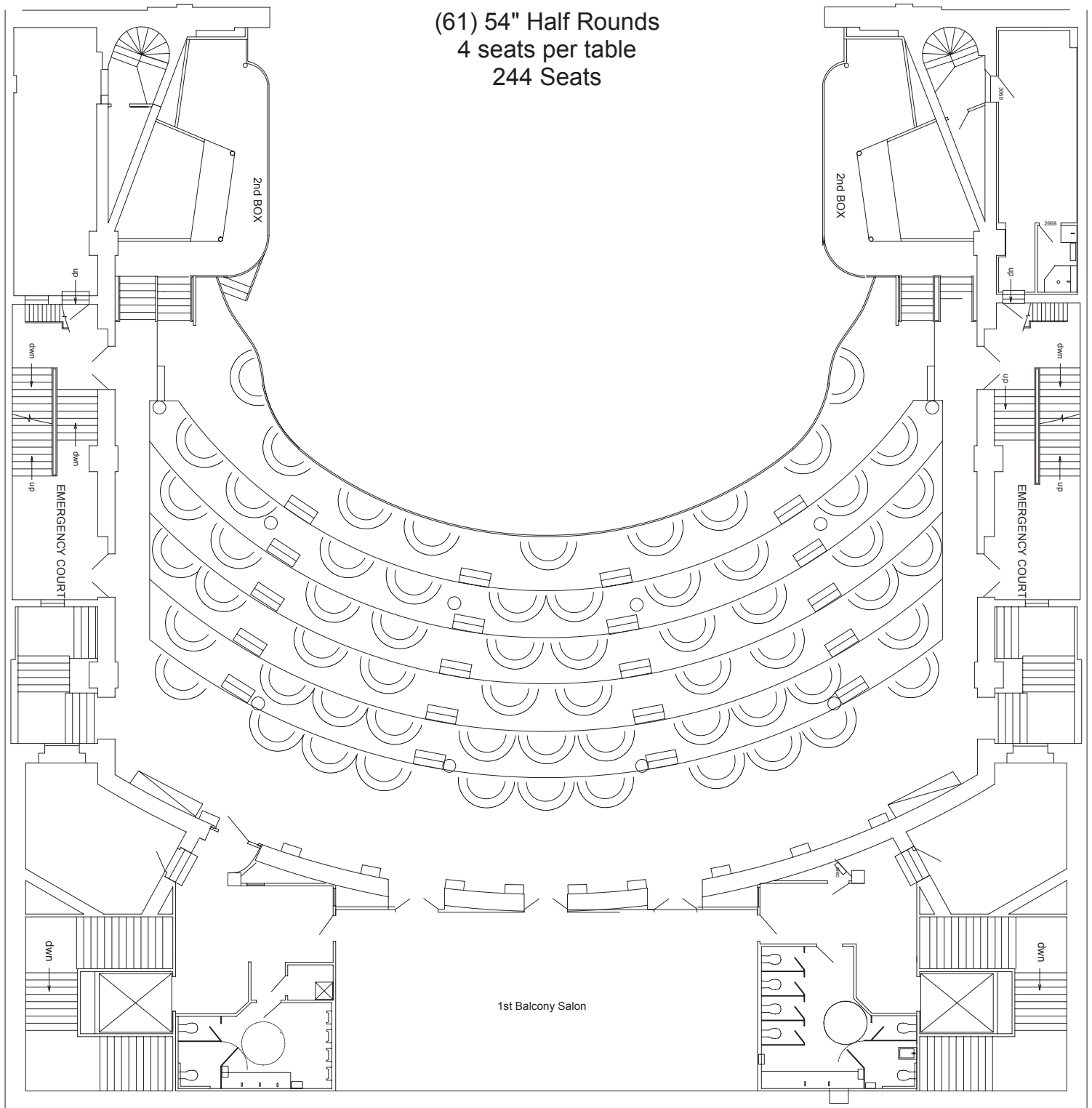
ELEVATOR

ELEVATOR

THE HAMMERSTEIN: 1ST BALCONY SEATED



(61) 54" Half Rounds
4 seats per table
244 Seats



THE HAMMERSTEIN: 2ND BALCONY

535 Fixed Seats

